

Massachusetts Acute Care Hospital Readmissions Profile: July, 2012 to June, 2013

Wing Memorial Hospital

September 2015

In June, 2015 the Center for Health Information and Analysis (CHIA) released [Hospital-Wide Adult All-Payer Readmissions in Massachusetts: 2011-2013](#), its first annual report on hospital-wide all cause readmissions in the Commonwealth. That report applied the Hospital-Wide All-Cause Unplanned 30-day Readmission Measure developed by the Centers for Medicare and Medicaid Services (CMS) and the Yale Center for Outcomes Research to the adult all-payer population in the Commonwealth. It included detailed readmission statistics for the state as a whole and hospital-specific readmission rates for 62 acute-care hospitals. This readmission profile series provides more in-depth information on each hospital.

This profile contains readmission statistics for Wing Memorial Hospital presented in the context of the statewide figures and of the patient population that Wing Memorial serves. CHIA hopes that these reports will be useful to hospitals and to other stakeholders working to reduce readmissions in the Commonwealth. The profile is based on data submitted by Massachusetts acute-care hospitals to CHIA's Hospital Discharge Database (see www.chiamass.gov/case-mix-data/).

It is important to note a few features of the Yale/CMS readmissions methodology as modified by CHIA for Massachusetts reporting.

- The calculations reflect the all-payer population. CMS reports on Medicare Fee-for-Service patients only.
- Readmissions from Wing Memorial back to Wing Memorial as well as those back to other acute-care hospitals in the Commonwealth are included.
- The calculations exclude primary psychiatric and obstetric discharges.
- The calculations include adults (age 18+) only.
- This profile primarily covers the state fiscal year FY13, from July, 2012 to June, 2013. Some data displays include the three-year period from July, 2010 to June 2013.
- Breakouts with fewer than 11 data points (e.g. discharges, readmissions, or patients) are suppressed to protect patient privacy.

Please note, the bar graph on frequent users (page 6 top) and the bar graphs for payer and discharge setting (page 3 right) have been updated to ensure consistency in calculation methods across different CHIA readmissions data products. For definitions of the terms and methodology used in this report please see the statewide report.

It is important to note that with the exception of the table on this page and the first figure on the next, the readmission rates reported here are not risk-adjusted. The patterns and trends reported in this profile reflect this hospital's patient case-mix, practice patterns, and any licensure for providing specialized inpatient services.

This report contains the following information profiling readmissions at Wing Memorial. Except where indicated below, all displays cover the period from July 2012 to June 2013.

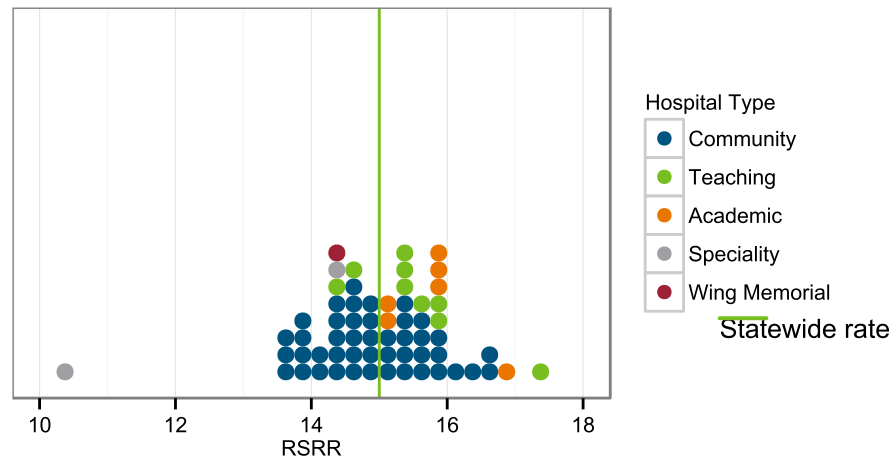
- [Overview readmissions statistics](#)
- [Risk-standardized readmission rates by hospital type](#)
- [Readmission rates by quarter \(July 2010 to June 2013\)](#)
- [Number of readmissions by time since discharge](#)
- [Readmission rates by age](#)
- [Readmission rates by payer type](#)
- [Readmission rates by discharge setting](#)
- [Diagnoses with the highest numbers and rates of readmissions](#)
- [Readmissions to other hospitals](#)
- [Readmissions among frequently hospitalized patients \(July 2010 to June 2013\)](#)
- [Detailed readmission figures for quarter, payer type, and discharge setting](#)

Overview Readmissions Statistics, July 2012 to June 2013

This table contains the overall readmission statistics for Wing Memorial. The statewide figures are provided for comparison.

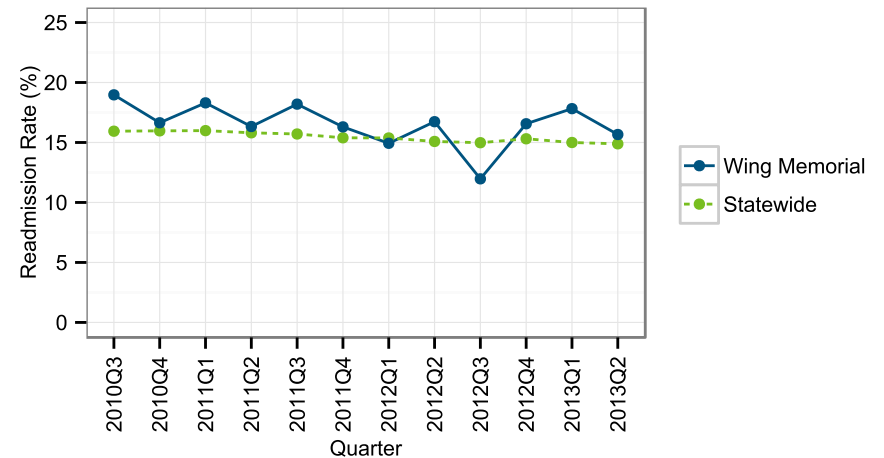
	Wing Memorial	Statewide
Eligible Discharges	2,273	508,354
Readmissions	355	76,481
Readmission Rate	15.6%	15.0%
Risk-Standardized Readmission Rate	14.4%	15.0%

All-Payer Risk-Standardized Readmission Rates by Hospital Type, July 2012 to June 2013



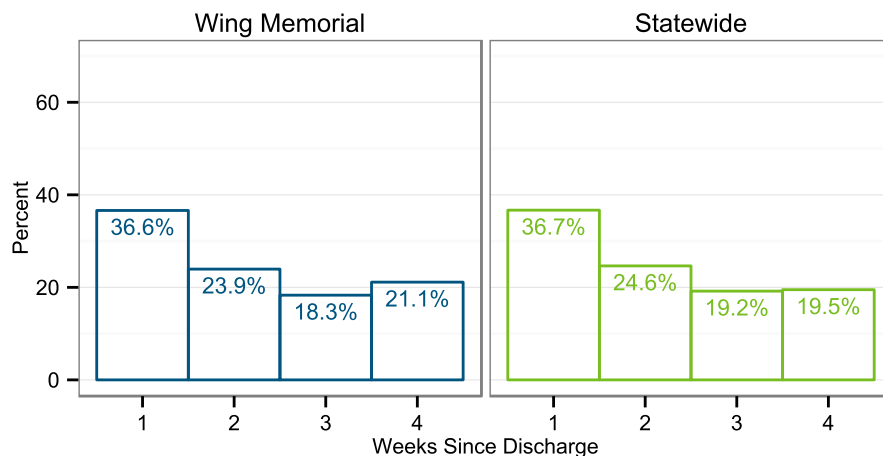
This graph shows the distribution of risk-standardized readmission rates for hospitals. Wing Memorial is indicated by the red dot. Please see the statewide report for information on how hospital types are defined.

All-Payer Readmission Rate by Quarter, July 2010 to June 2013



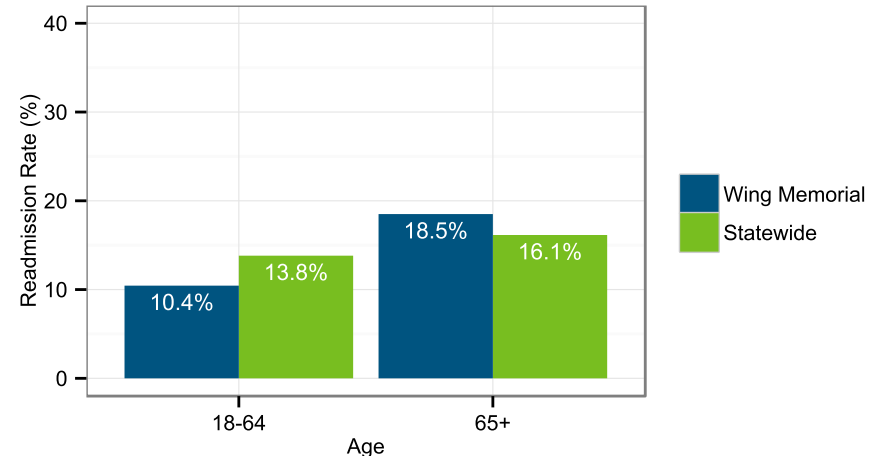
This graph shows the readmission rate for Wing Memorial over time in comparison to the statewide rate.

Length of Time Between Discharge and Readmission, July 2012 to June 2013



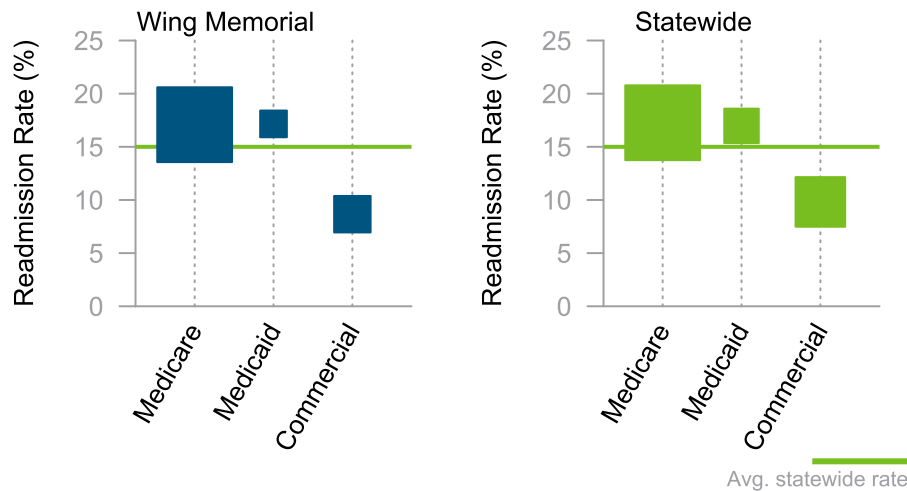
These plots show the percentage of readmissions by week from the time of the initial discharge.

All-Payer Readmission Rates by Age, July 2012 to June 2013



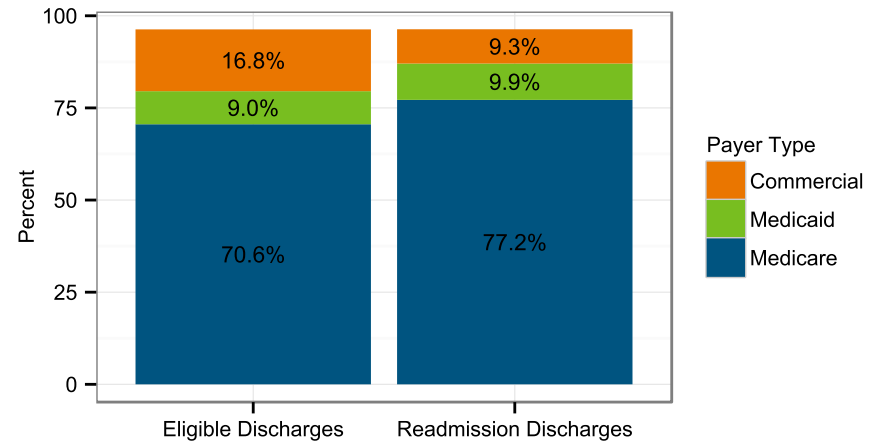
This graph shows readmission rates by age for Wing Memorial and for the state.

All-Payer Readmission Rate by Payer Type, July 2012 to June 2013



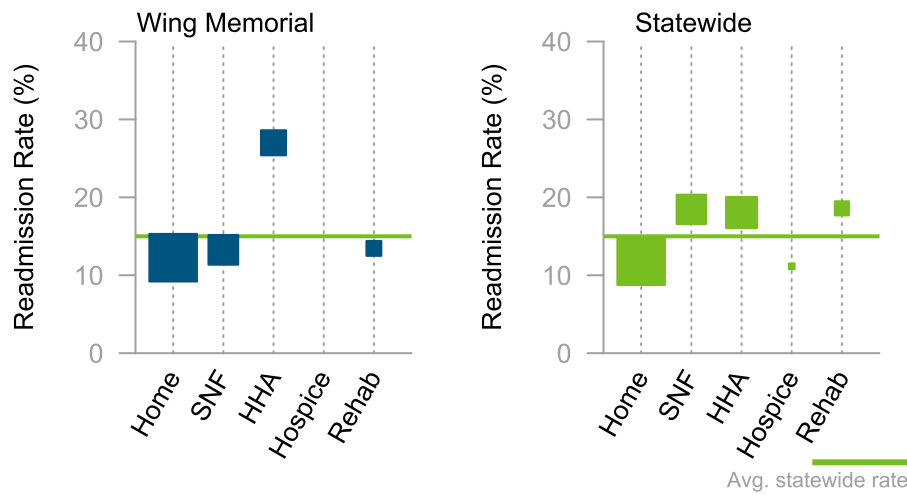
These plots show hospital and statewide readmissions broken out by the expected payer type. Vertical position of the box indicates the rate, and the size of the box is proportional to the number of readmissions.

Payer Type Profile, July 2012 to June 2013



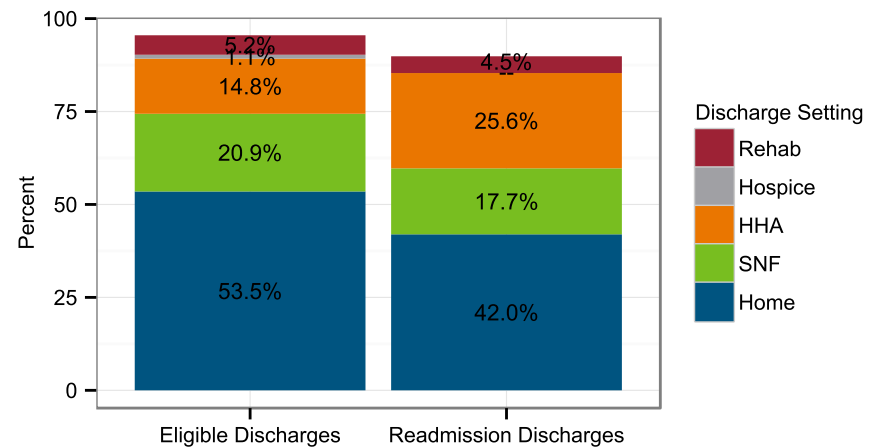
This chart compares the payer profile of discharges from Wing Memorial that resulted in a readmission to the payer profile of all eligible discharges at Wing Memorial. Note: "Self-Pay" and "Other" categories not shown.

All-Payer Readmission Rate by Discharge Setting, July 2012 to June 2013



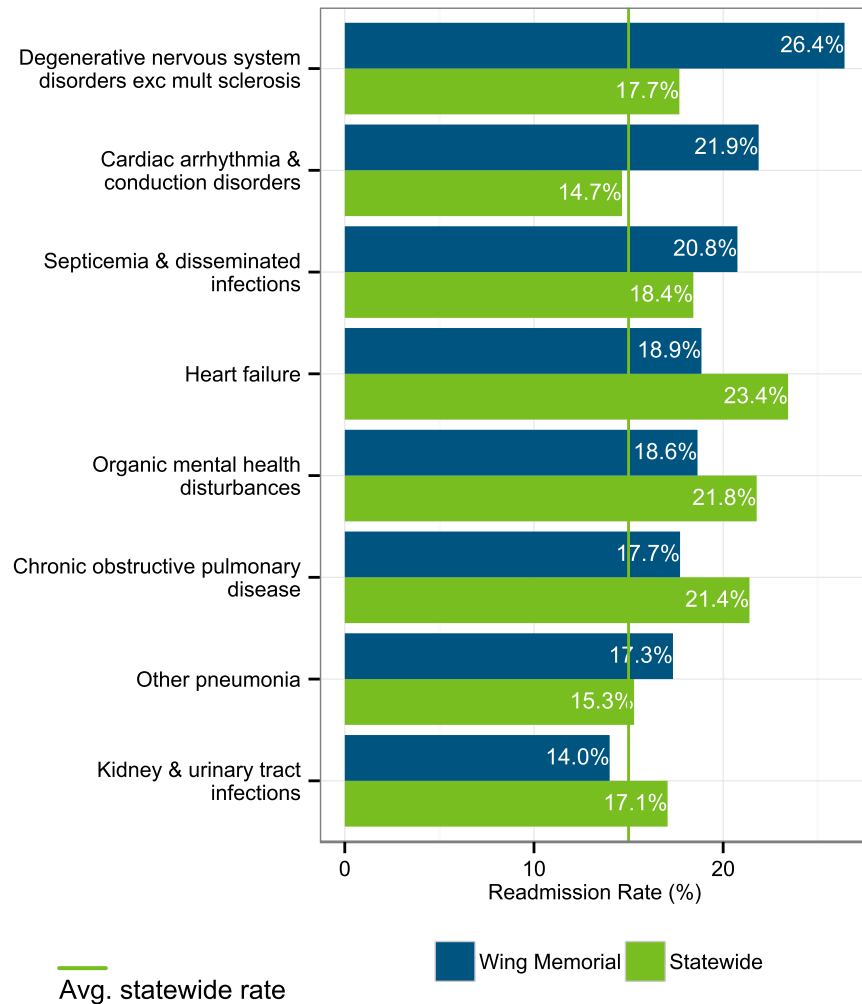
This graph shows readmission rate by the setting to which the patient was originally discharged. Note: SNF = skilled nursing facility, HHA = home with home health agency care.

Discharge Setting Profile, July 2012 to June 2013



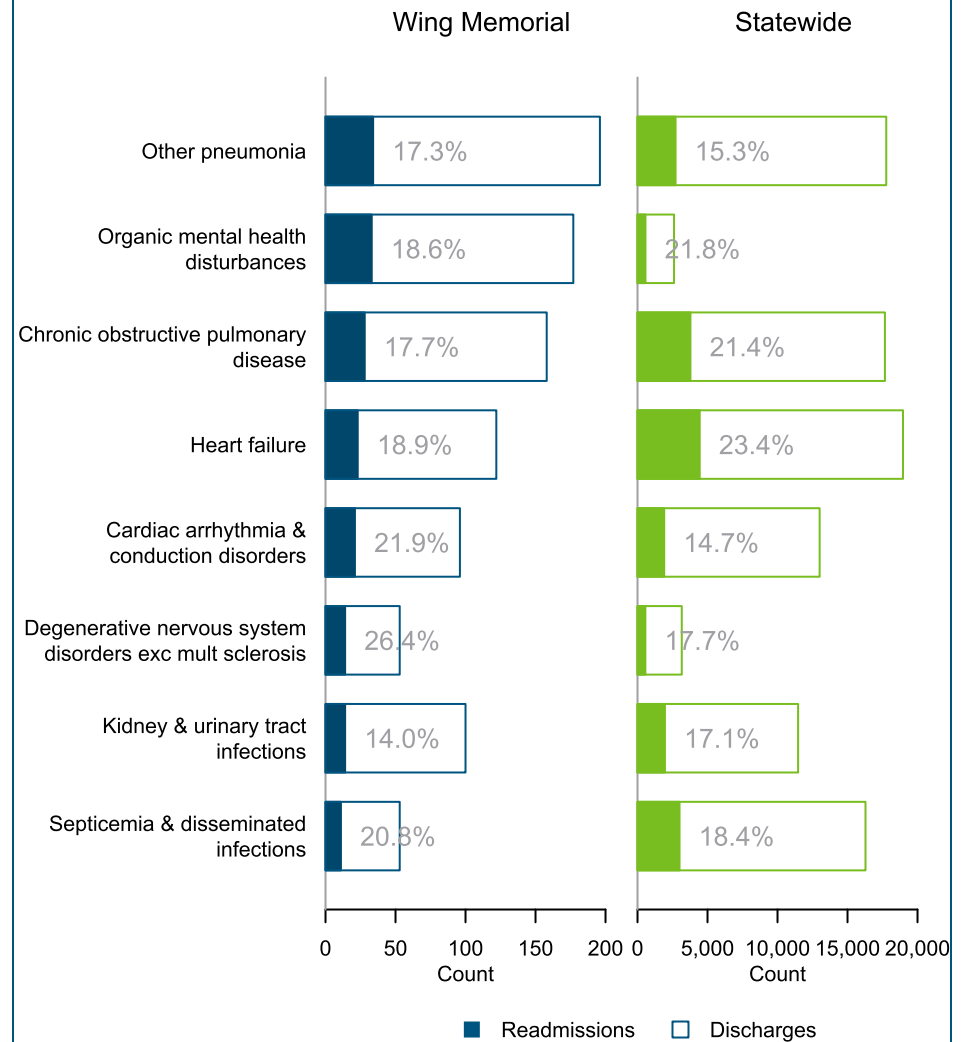
This graph shows the distribution of discharge settings for readmission discharges compared to all the eligible discharges at Wing Memorial. Cells with < 11 cases are suppressed to protect patient privacy (indicated by "--").

Top Diagnoses with Highest Rates of Readmission, July 2012 to June 2013



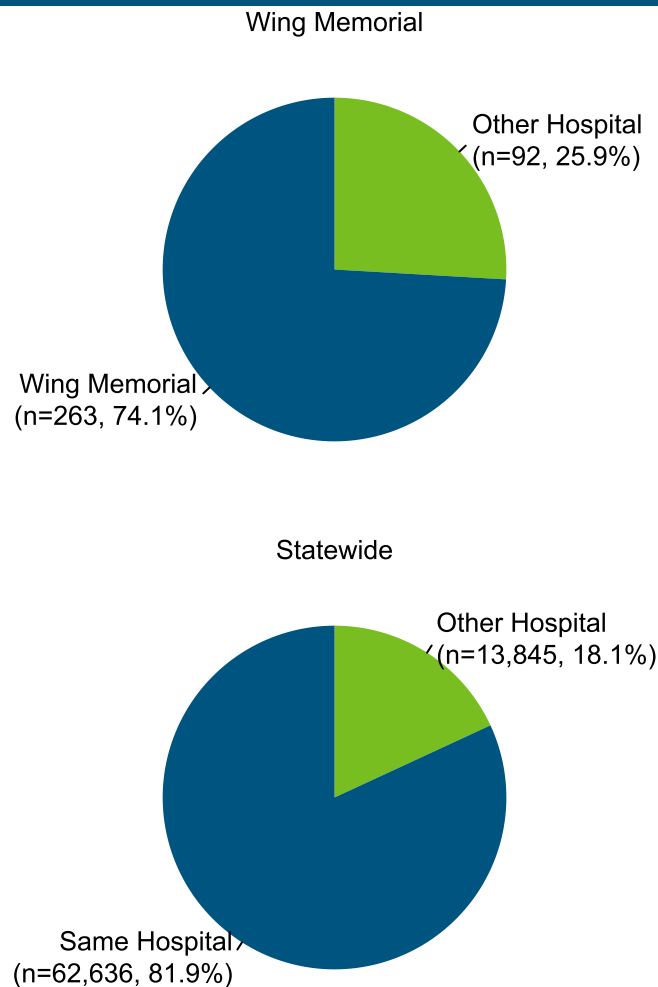
This plot shows the 10 discharge conditions with the highest rates of readmissions for Wing Memorial and corresponding figures for those conditions statewide. Note: Only conditions with 25 or more discharges and 11 or more readmissions are included.

Top Diagnoses with Highest Numbers of Readmissions, July 2012 to June 2013



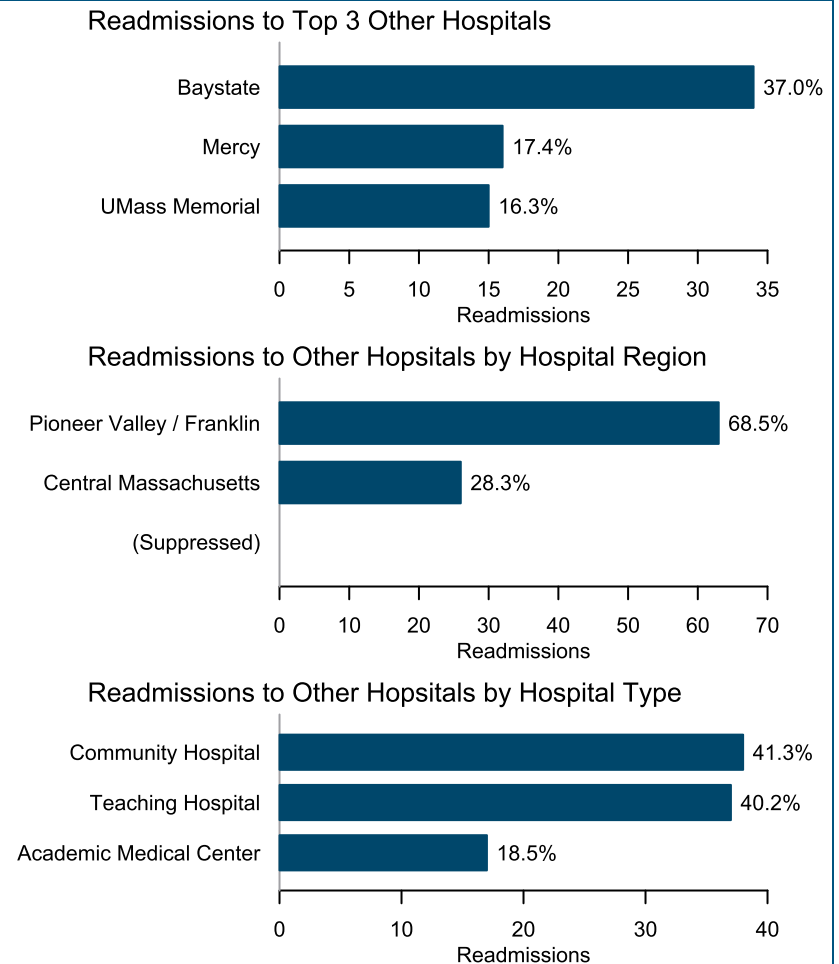
These plots show the 10 discharge conditions with the highest numbers of readmissions at Wing Memorial and the corresponding figures for those conditions statewide. The outlined bars represent the total number of discharges for each diagnosis, and the filled-in bars show the number of readmissions. The figures next to each bar give the readmissions rate. Note: Only conditions with 25 or more discharges and 11 or more readmissions are included.

Readmissions to Other Hospitals, July 2012 to June 2013



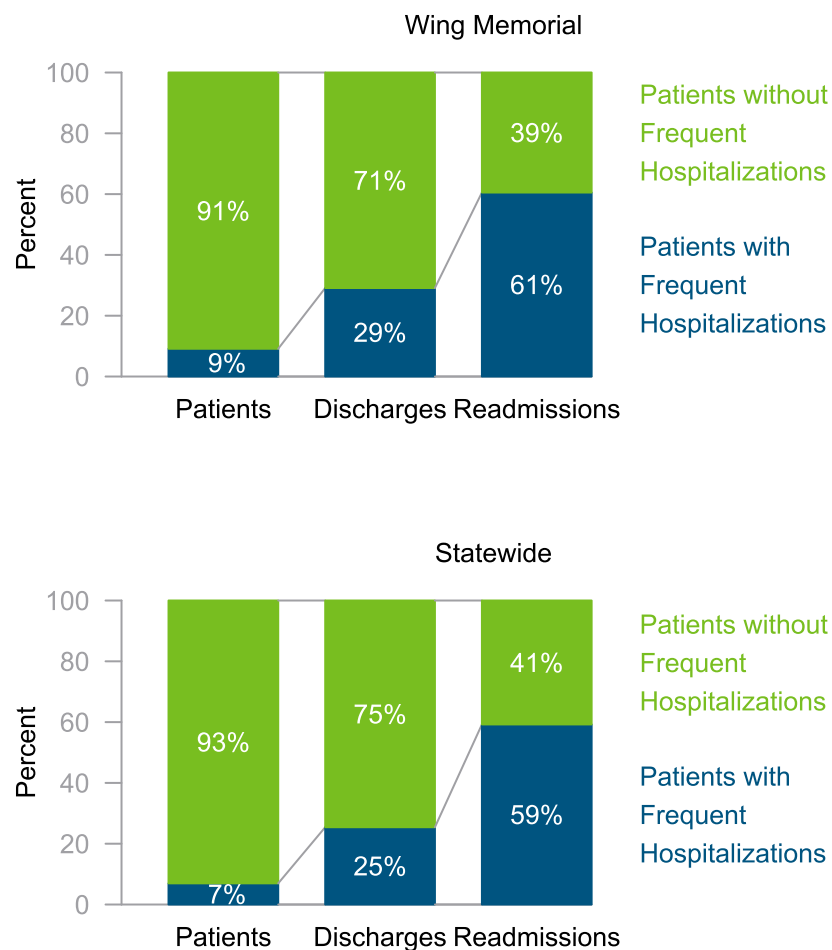
This figure shows the proportion of the readmissions from Wing Memorial that were to another hospital, along with the corresponding statewide figure.

Characteristics of Readmissions to Other Hospitals, July 2012 to June 2013



This display provides more information on discharges from Wing Memorial in which the patient was subsequently readmitted to another hospital. The top portion of the figure shows the top three other hospitals to which patients from Wing Memorial were readmitted. The middle portion shows the regions in which these patients were readmitted. The bottom portion shows the types of hospitals to which they were readmitted. The percentage for each bar represents the percentage that group represents of the total number of readmissions from Wing Memorial that were readmitted to other hospitals. Due to data privacy concerns, only groups with 11 or more readmissions are listed. For definitions of the geographic regions, please see the statewide report.

All-Payer Readmissions among Frequently Hospitalized Patients, July 2010 to June 2013



In the statewide report, CHIA reported readmissions for frequently hospitalized patients, defined as those with four or more admissions in any one-year period from July 2010 to June 2013. This chart shows the percentage of patients, discharges, and readmissions accounted for by frequently hospitalized patients at Wing Memorial.

Hospital Readmissions among Frequently Hospitalized Patients by Payer Type, July 2010 to June 2013

	Number of Patients	Percentage within Group	Number of Discharges	Number of Readmissions	Readmission Rate (%)
Patients with Frequent Hospitalizations	339	100.0%	2,183	756	34.6%
Commercial	26	7.7%	149	43	28.9%
Medicare	269	79.4%	1,791	612	34.2%
Medicaid	37	10.9%	208	85	40.9%
Patients without Frequent Hospitalizations	3,371	100.0%	5,315	493	9.3%
Commercial	848	25.2%	1,080	57	5.3%
Medicare	2,005	59.5%	3,541	379	10.7%
Medicaid	339	10.1%	489	46	9.4%
Total Patients	3,710		7,498	1,249	16.7%

This table shows the breakdown of patients at Wing Memorial with frequent hospitalizations by payer type, and the associated readmission rates for these groups. Note: Percentages within groups do not sum to 100 because the table excludes "Self-Pay" and "Other" categories which together sum to less than 5% of discharges. Patients with frequent hospitalizations are defined as those with four or more admissions in any one-year period from July 2010 to June 2013. Cells with fewer than 11 cases are suppressed to protect patient privacy and are indicated by dashes.

Detailed Readmissions Figures

This table contains breakouts of readmission rates by payer type, quarter, and discharge setting. Statistics for groups with fewer than 11 cases are excluded to protect patient privacy, and are indicated by dashes.

Characteristic	Wing Memorial			Statewide		
	Number of Discharges	Number of Readmissions	Readmission Rate (%)	Number of Discharges	Number of Readmissions	Readmission Rate (%)
Overall, July 2012 to June 2013						
Overall	2,273	355	15.6%	508,354	76,481	15.0%
Age, July 2012 to June 2013						
18-64	814	85	10.4%	240,507	33,233	13.8%
65+	1,459	270	18.5%	267,847	43,248	16.1%
Year and Quarter, July 2010 to June 2013						
2010Q3	680	129	19.0%	134,869	21,499	15.9%
2010Q4	709	118	16.6%	136,216	21,753	16.0%
2011Q1	754	138	18.3%	136,669	21,851	16.0%
2011Q2	692	113	16.3%	137,362	21,712	15.8%
2011Q3	654	119	18.2%	133,936	21,038	15.7%
2011Q4	638	104	16.3%	133,129	20,490	15.4%
2012Q1	596	89	14.9%	133,659	20,553	15.4%
2012Q2	502	84	16.7%	131,942	19,904	15.1%
2012Q3	518	62	12.0%	127,337	19,077	15.0%
2012Q4	628	104	16.6%	127,928	19,583	15.3%
2013Q1	578	103	17.8%	127,151	19,071	15.0%
2013Q2	549	86	15.7%	125,938	18,750	14.9%
Payer Type, July 2012 to June 2013						
Medicare	1,604	274	17.1%	295,261	50,973	17.3%
Medicaid	204	35	17.2%	62,717	10,643	17.0%
Commercial	381	33	8.7%	129,873	12,749	9.8%
Discharge Setting, July 2012 to June 2013						
Home	1,216	149	12.3%	258,860	30,541	11.8%
SNF	475	63	13.3%	99,346	18,335	18.5%
HHA	337	91	27.0%	110,419	19,946	18.1%
Hospice	24	--	--	3,851	429	11.1%
Rehab	119	16	13.4%	22,988	4,273	18.6%